

# ASPHALT



## TECHNICAL DATA SHEET

SAFETY SHOE FOR ASPHALT WORKERS  
VIBRAM NITRILE RUBBER SOLE 300°HEAT RESISTANT

EN ISO 20345:2012 S2/P HRO HI CI FO SRC

PPE Category:	II_serius risks EU Regulation 2016/425
Model:	Height 14 cm
Upper:	2,4 mm.Waterproof Full Grain leather
Lining:	Netvision Breatable
Insole:	Felt breathable with memory foam 3,5 mm.
Sole:	Vibram Asphalt Hight Grip Performance 300° heat resistant
Laces:	Polyester cm.120
Sizes:	Mondopoint EU 38-48 UK 5-13
Weight:	860 Gr. half pair size 43



Netvision Breathable

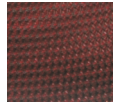


## TECHNOLOGY

Vibram Sole Asphalt



Netvision Breathable



Anatomic System



Air System

